



scanomat

coffee solutions for more than 50 years

Care & User Manual - TopBrewer Compact



Model: 1557usver20.01 & 1557euver20.01

English Version

Version 1.1

CB

CE



Congratulations on your choice of Scanomat Coffee Brewer.

Should you have any questions regarding the coffee brewer and the operation of it please do not hesitate to contact us.

Support Email: support@scanomat.com

FAQ Database: <http://support.scanomat.com>

We are convinced that you will be pleased with your choice!

Operation of the SCANOMAT Coffee Brewer

The Scanomat coffee and coffee speciality brewers are high technology brewers which by means of a micro processor controlled brewing process dispenses various first class quality coffee drinks. Water is heated in the thermostatically controlled hot instant solid state boiler with automatic water inlet. The boilers have built-in safety switches. By means of a grinder, coffee beans are grinded and led to a brew chamber and here water is added. If necessary, coffee can be tampered in the brew chamber. The finished coffee drink is led to the "Swan Neck" outlet.

Important:

Warning:

Please be aware of the danger of scalding (in the dispensing area) when dispensing the various hot drinks.

Warning:

Before cleaning, servicing etc. that require the opening of the front door, the switch situated in the delivery area must be switched off. The brewer has been switched off when the display light turns off and the fan stops.

Note:

Please be aware that the switch only disconnects control circuit, not the power supply.

Warning:

This appliance is not intended for use by persons (including children) with

reduced physical sensory or mental capabilities, or lack of experience and knowledge, unless they have been given supervision or instruction concerning use of the appliance by a person responsible for their safety.

Children should be supervised to ensure that they do not play with the appliance.

Warning:

Access to the service area is restricted to persons having knowledge and practical experience of the appliance, in particular as far as safety and hygiene are concerned.

Note:

The new detachable hose set supplied with this appliance are to be used at installation, and old hoses are not to be reused.

Note:

Hose sets shall comply with IEC 61770 or local requirements, and back-flow prevention are required.

Warning:

This coffee brewer might be equipped with a Fresh Milk system. Fresh milk is a potential hazardous food, where the safety of the food depends upon the temperature and duration of store, as well as good cleaning and hygienic procedures (HACCP).

Technical specifications:	6
Installation:	7
Table layout:.....	8
Water connection:.....	10
Features:	11
Preventive maintenance:.....	12
Operational procedures:	13
The App.....	13
iPad Proxy mode.....	14
The keyboard:.....	15
Selection buttons:.....	15
Pre-selection buttons.....	15
Navigation button:.....	15
The Display:.....	16
Dispensing a single standard drink:.....	16
Pre-selections:.....	16
Dispensing carafes:.....	17
Dispensing large cups:.....	17
Dispensing strong or mild drinks:.....	17
The menu:.....	18
Reading out data from the machine:.....	19
Reading the cup counters:.....	19
Clearing the cup counters:.....	19
Adjusting the machine:.....	20
Adjusting cup sizes:.....	20
Adjusting drink strength:.....	21
Adjusting large:.....	21
Adjusting carafe:.....	22
Adjusting the temperature:.....	22
Adjusting the brew limit:.....	23
Adjusting the bean to cup boiler temperature:.....	23
Adjusting the steamer temperature:.....	23
Adjusting milk Temperature:.....	24
Adjusting version:.....	24
Adjusting the watch:.....	25
Adjusting the timers:.....	25
Machine settings:.....	26
Key beep:.....	26
Child lock:.....	26
Disable keypad.....	26
Fahrenheit:.....	26
Am / Pm time:.....	26
Display watch:.....	27
Automatic off:.....	27
Cup light:.....	27
Carafes:.....	27
Mugs:.....	27
Auto start:.....	27
Adjust lock:.....	27
Water tank:.....	27
Instant:.....	27
2 key clean:.....	27
Queuing:.....	27
BT reset:.....	28
BT iOs Support:.....	28
BT Visible:.....	28
BT Pairing:.....	28
Weighing:.....	28
Service key mode:.....	29
Connection chart:	30
Daily Cleaning & Maintenance:	31

Trouble Shooting:33
 Bluetooth Troubleshooting.....34

Technical specifications:

Power supply:

Single phase 208-240 VAC 60 Hz with ground connection

Dimensions:

Height: 66,2 cm.

Width: 18,3 cm.

Depth: 50,0 cm.

Water tank:

Instant solid state water boiler.

Weight:

Gross: 42 kg.

Nett 38 kg.

Water connection:

Pressure: 200 kPa (2 Bar) – 600 kPa (6 Bar).

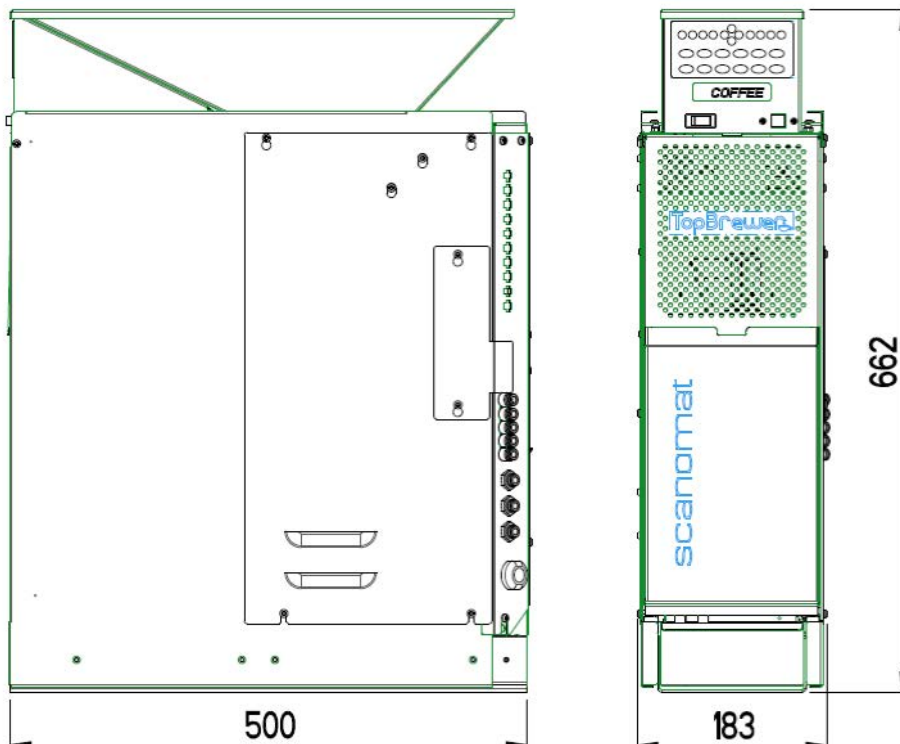
Environment:

Ambient operation temperature: 10-30° C.

Humidity: max. 90% RH.

Shelves / transportation:

Temperature: min 1° C.

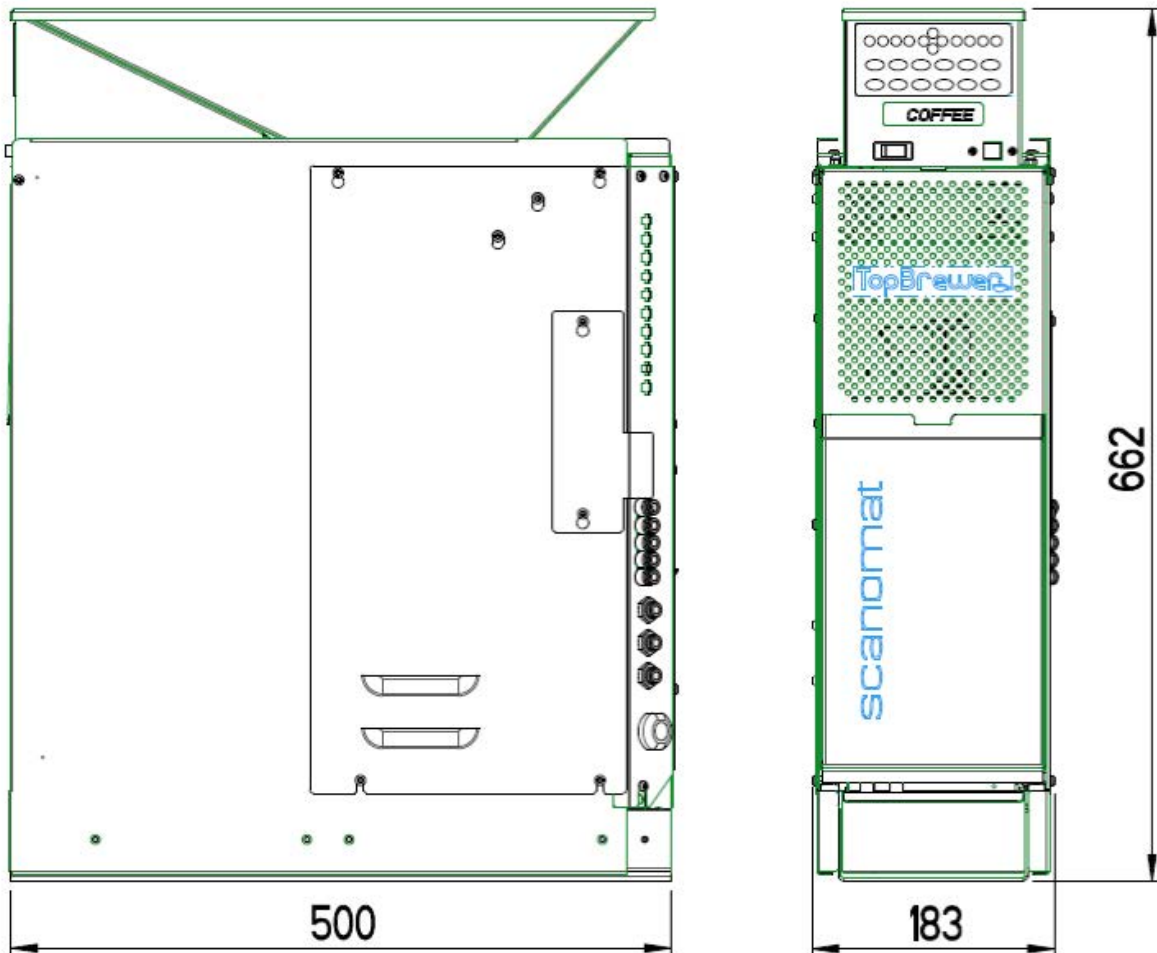


Installation:

The following installations must be provided		
	Electrical Single phase	208-240 VAC Single phase, 60 Hz, with ground connection, 2400-4700 W, 20 Amp
	(optional)	11 Amp. (priority heating*)
	Drain	Required floor drain near machine
	Water Inlet	Pressure 2-6 bar, 200-600 kPa.
		Flow rate min. 5l./min.
		Temperature 5-12 °C / 41-53 °F
	Table	See diagram below
	Installation Temperature (environment)	Maximum 35 °C / 95 °F

Download the Pre-Installation guide from TopBrewer.com for the complete setup

Table layout:



Service and repair is only to be carried out by service engineers educated by Scanomat.

The coffee brewer is to be secured additionally in accordance with regulations.

The coffee brewer must be earth connected (yellow/green conductor).

Note:

If the supply cable (power cord) has been damaged, please note that only a maintenance engineer recommended by the manufacturer is to renew it, as special tools are required.

Earth conductor: yellow/green

Neutral conductor: white

Phase: black

Note:

Ensure that the TopBrewer is secured with minimum of 6 screws into the baseplate of the cabinet, so that the TopBrewer is able to slide out as intended for cleaning/filling/maintenance

Note:

The coffee brewer requires ventilation. Therefore there must be a minimum of 50 mm from the backside of the brewer to the wall. The grating must be inspected frequently and vacuum-cleaned. If the installation site/environment is especially dusty there must be vacuum-cleaned each month.

Note:

Before connecting the coffee brewer draw off some buckets of water by means of the hose (to clean the pipes and to avoid a disagreeable taste). This procedure is also recommended when the brewer has not been operating for some time.

Note:

We recommend that the brewer be switched on permanently due to the ventilation system among others.

Note:

The A-weighted noise pressure level of this appliance is less than 70 dB.

Note:

Coffee brewers equipped with steam generator (fresh milk system) must use TopBrewer Filters on the main water line and a dedicated filter the steam line in order to ensure water hardness. (Filter Start Kit)

Water connection:

When the water supply is being established please make sure that the coffee brewer is not situated on the rear end of the water supply system to ensure continuous supply of fresh water.

1. Connect your approved water line (not included from factory) to the $\frac{3}{8}$ thread check-valve supplied in the TopBrewer Filter Start Kit. Before connecting the brewer draw off portions of water. We always recommend using TopBrewer filtration systems.
2. Fasten the hose nipple to the valve
3. Turn on the water and make sure that all joints and connections are tight.

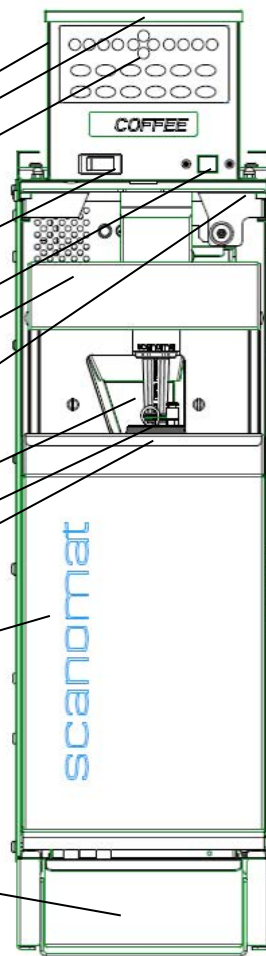
Note:

It is important that the inlet water supply in a primary supply with its own 'stopcock' this is to ensure that during daily operation there is a constant water pressure at the inlet.

Features:

General Drawing

- A Bean canisters
- B Canister lid
- C Keyboard
- D Main switch
- E Programming
- E Brewer unit
- F Brewer unit door
- G Coffee Funnel
- H Brewer piston
- I Dreg scraper
- J Dreg Bin
- K Waste tray



Important:

To maintain the high drink quality and efficient operating conditions it is of the utmost importance that all components that are in contact with the drinks are kept clean.

Important:

Machines dispensing beverages must be manufactured, installed and operated in a way that leaves absolutely no risk of impairing or ruining the beverages. All operations must follow the HACCP regulation.

Important:

Do not immerse the coffee machine into water and do not use high pressure cleaner

Note:

A high degree of frequent daily maintenance secures a high level of trouble free operation of the coffee machine.

Preventive maintenance:

The bean canisters are to be cleaned at regular intervals depending on the performance, usage and type of beans used in the machine.

- 1) Use hot water with a mild soap solution
- 2) Remove ingredient canisters. Remember to insert the closing plates.
- 3) Empty canisters and remove remnants, if any.
- 4) Clean in soapy water.
- 5) Re-mount the bean canisters, remove the closing plate and fill up with beans for one day's consumption. Please make sure that the canisters are completely dry before filling.

Brewer Unit:

The brewer unit is one of the most important units in the coffee brewer, and as such it is very important to keep this unit in good, clean condition.

- 1) Use hot water with a mild soap solution (see also chapter "Daily cleaning").
- 2) Switch of the coffee brewer on the main switch (C).
- 3) Open the door into the brewer unit. Take care some parts might be very hot.
- 4) Brush away all dry coffee rests.
- 5) Remove the top piston. Take care not to loose the clip and the two concave washers.
- 6) Wash the top piston. Remove the O-ring, clean the groove and the O-ring. If the O-ring do not have a O-formed shape, it must be renewed.
- 7) Reinstall the O-ring.
- 8) Unscrew the coffee filter in the Piston, clean the filter and underneath the filter.
- 9) Refit the filter.
- 10) Take a look inside the brewing chamber. If there are coatings of coffee inside the brewer chamber, clean with a wet cloth.
- 11) Refit the Piston. Remember that the two concave washers must have the concave side against each other.
- 12) Clean the scraper plate. Remember to clean the upper edge of the brewer cylinder.
- 13) Clean the scraper arm and especially the rubber seal.
- 14) Clean the coffee funnel, leading grinded coffee into the brewer. This funnel must be absolutely clean and dry.

Operational procedures:

The App

Every TopBrewer is shipped with a built in Bluetooth module. This allows you to connect your iPhone, iPad or Android device to the machine and control the most important features. It also allows you to customize your drinks to your liking and save as a predefined favorite.

First time you use the app, you simply hit the large, round "S" logo and select your TopBrewer from the list. The connection can take a few seconds the first time you connect, but are then saved for fast connection next time.

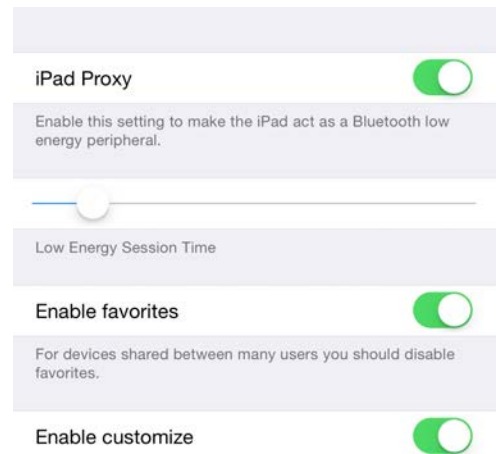
We encourage only one user at the time to be connected directly to the machine. Once you exit the app, you will automatically have your bluetooth connection between your device and the machine terminated. This allows for the next user to logon seamlessly. You simply fire up the app and wait for it to auto reconnect.



iPad Proxy mode

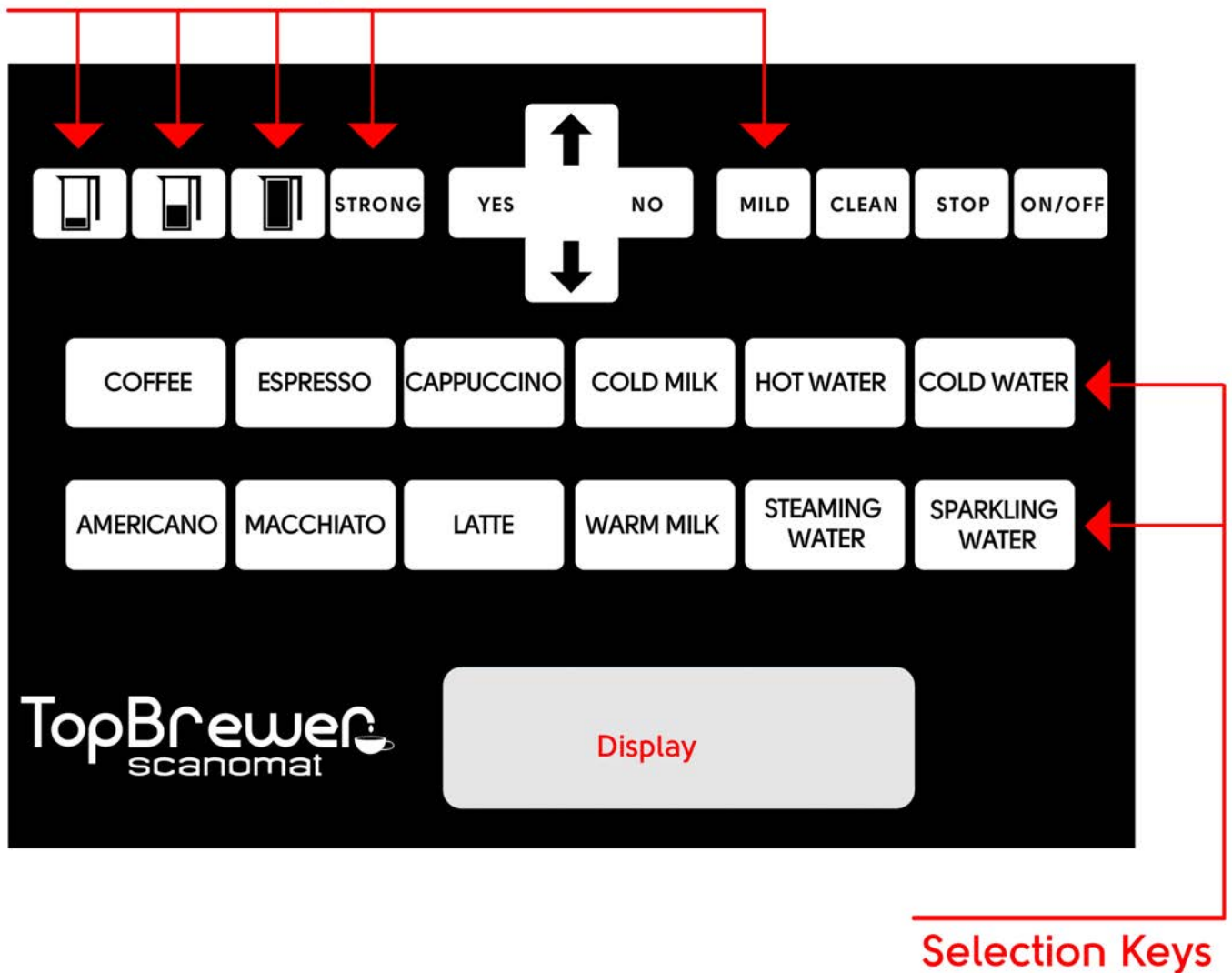
The iPad proxy mode is great if you would like to connection to your machine at blazing fast speeds. To use it, you need an iPad connected to the machine at all times, thus using the iPad as a relay antenna. To enable the proxy mode, exit the app entirely from the multitasking menu (double tap home button) and go into the Settings menu on the iPad. Located the app "TopBrewer" from the list and enable "iPad Proxy" mode.

Open op the TopBrewer app on the iPad, allow it to reconnect (if already paired) and let the menu appear on the screen. Now, the TopBrewer will appear on a list view in the iPhone app, which you can connect to very quickly. This also allows for multiple iPhones to be available at the same time,



The keyboard:

Preselection Keys



Selection Keys

Selection buttons:

The selection buttons will, when the machine is operational, meaning water in the tank and warm enough dispense the selected drink. Place the cup at the appropriate position. If more positions, the right one, will be indicated on the front of the machine.

Pre-selection buttons

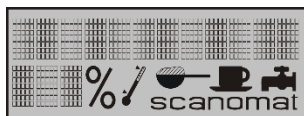
These buttons will activate a pre-selection to the next drink. The pre-selection buttons may differ from machine to machine and in some machines they may not all be active.

There is a time out of 15 seconds on all pre-selections.
 Multiple pre-selections are allowed e.g. strong, carafe
 Pressing NO or STOP will cancel all pre-selections

Navigation button:

The navigation button is used to access the menu and programming system of your coffee machine. When in adjust mode the UP and DOWN keys have an automatic repeat function. This is activated by holding the key instead of just giving a single press. In that case the adjustment will "run" instead of just step.

The Display:



The display will show relevant information in clear text, and in symbols.

The thermometer will blink, if the temperature in the water tank is too low for dispensing.

The water valve will blink if not sufficient water in the water tank. Turning the machine on and off: There are 2 ways of turning the machine off. Either by pressing and holding the ON/OFF button for 2 seconds, or by switching the power off completely by activating the mechanical switch in the dispensing area.

Using the first option, will keep the electronic board running with a very low power consumption (less than 1 watt). As the internal watch in the machine is dependent on power, always select this way to turn the machine off, if you are using this. When the machine is OFF, the light in the display will be gone, and only the Scanomat logo will be active.

Switching back on is done by pressing the ON/OFF button, or if this setting is active, by pressing a selection button

Dispensing a single standard drink:

Place a cup under tap / swan neck and press a selection button on either the keyboard or smart device. While brewing the display will show the name of the selected drink



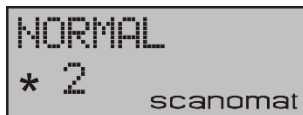
Pre-selections:

Apart from the direct selection buttons, a number of pre-selection possibilities are available, these will be explained in detail hereafter. The pre-selections can be used more than one at a time, for example a carafe of strong decaf coffee is possible, if the machine has all these 3 options available. To cancel any pre-selection, press STOP or NO. All the preselections are controlled by a timer meaning that if no selections is made within 15 seconds after the pre-selection, this will time out. After the drink is dispensed, all pre-selections are reset, so if e.g. 2 strong coffees are wanted the, strong needs to be pressed before each cup.

Dispensing carafes:

Making a carafe of any product in this machine is always carried out as making a number of cups of the selection in question.

Place a carafe under the proper dispensing outlet. If more than one outlet is available, a graphic on the front of the machine will show which selections correspond with which outlets. Either press a direct carafe button, if such is available on the keypad, otherwise use the navigation button to scroll up to a carafe. The display will show:



While brewing the display will show the name of the selected drink and the number of cups left for this carafe.

Pressing STOP or NO any time during a carafe brew will terminate the brewing.

Dispensing large cups:

When large is selected, the machine will dispense a cup, which is a certain percentage larger than the standard cup. This means that a large cup is not necessary the same size for all selections.

Either press the direct LARGE button, if such is available on the keypad, otherwise use the navigation button to scroll up to LARGE. The display will show:



Then press the desired selection.

Dispensing strong or mild drinks:

It is possible to adjust the strength for each individual drink by pressing STRONG or MILD prior to pressing the selection. The strength can be adjusted in +/- 10 steps. The display will show:



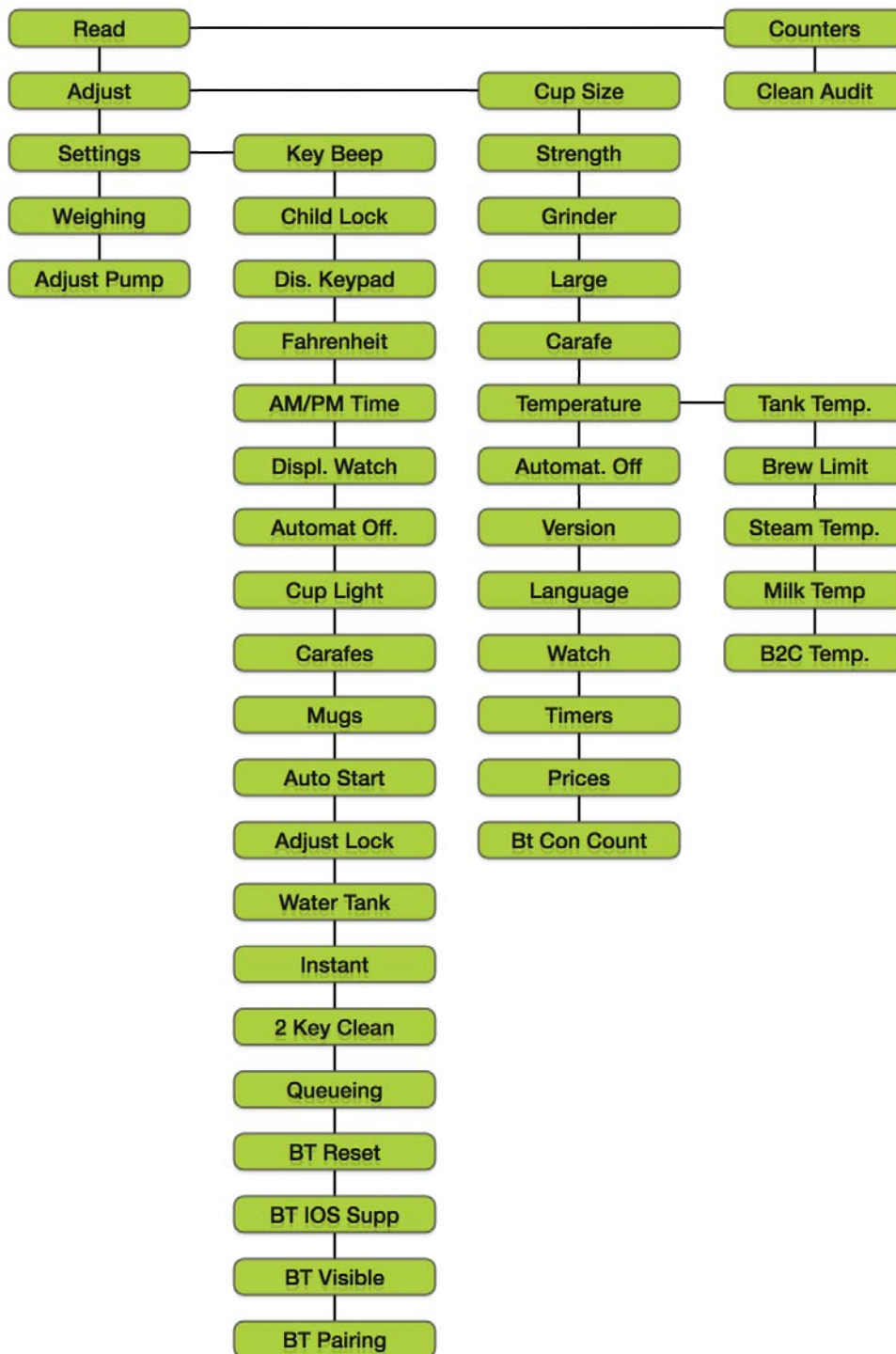
Which product in the drink that is influenced by this pre-selection varies from selection to selection. E.g. in a Cappuccino, strong and mild will affect the coffee only.

The menu:

Using the navigation button, the menu system for accessing all audit data, adjustments and settings of the machine can be reached. Pressing the arrow up and down, YES to enter a function, NO to go back one step, does the navigation through the different menus.

Please note that not all menu points described in this manual is available in all machines, as this can vary with different configurations.

The following sketch shows an overview of the complete menu system.



Reading out data from the machine:

Some data can be read out your coffee machine directly from the keyboard. Number of possibilities may vary from configuration of your machine Press the navigation button UP until following appears:



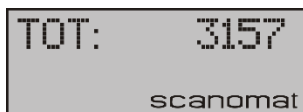
Press navigation button YES, and the first adjustable parameter will appear in the display. Pressing UP and DOWN will scroll between the possibilities.

Reading the cup counters:

Enter the read menu as described above, scroll to:



Press YES, and the display will show:



3157 being the total number of cups dispensed, including any cups, which were parts of a carafe. When the above display is shown, the individual cup counters for each selection can be read by pressing the selection buttons accordingly.

Clearing the cup counters:

Depending of the configuration of your machine, it may be possible to clear the cup counters (set them all to 0).

Clearing the counters also requires the machine to be in SERVICE KEY mode.

Use the procedure above to read out the total cup counter. When the total is in the display, press CLEAN, and the display will show:



Press YES to clear all the counters or NO to go back.

Adjusting the machine:

A lot of different parameters in the machine can be adjusted directly from the keyboard. Press the navigation button UP until following appears:



Press navigation button YES, and the first adjustable parameter will appear in the display. Pressing UP and DOWN will scroll between the possibilities.

Adjusting cup sizes:

The cup size can be adjusted for each selection independently. The pre-programmed cup size is referred to as 100% and not as a fixed volume, as the size may differ from selection to selection.

Enter the adjust menu as described above, scroll to:



Press YES and the display shows:



Press a selection button and the display shows:



Press UP or DOWN to reach the desired level and press YES to confirm. **NOTE:** Setting the cup size to 0% will disable the drink – as well from keyboard as from any connected smart phone / tablet. After pressing YES the machine will return to:



and a new selection can be adjusted or the function can be abandoned by pressing NO.

Note: We encourage to use the customize function in the iPad/ iPhone instead of altering the predefined sizes in the Adjust menu. This alters all standard drinks accordingly

Adjusting drink strength:

The drink strength can be adjusted for each product for each selection independently. The pre-programmed strength is referred to as 100% and not as a fixed amount, as it differs from selection to selection.

Enter the adjust menu as described above, scroll to:



Press YES and the display shows:



Press a selection button and the display shows (example)



This is pre-programmed amount of COFFEE in the selected drink. Press UP or DOWN to reach the desired value and YES to confirm. If the selected drink has more than one adjustable ingredient, the procedure will be repeated. When no more adjustable ingredients in the current selection, the display will return to:



Either select a new drink to adjust, or press NO to go back.

Adjusting large:

The large function is a way to make a selection a percentage bigger than the standard cup size for a selection. This is calculated as adding a percentage to the pre-programmed size.

Note that if the large function is not active in your machine, this parameter will not appear in the adjust menu.

Enter the adjust menu as described and scroll to:



Press YES and the display shows:



Press UP or DOWN to reach the desired value and YES to confirm.

Adjusting carafe:

The carafe function is a way to make number of cups of a selection. Depending on the configuration of your machine, it may have 1, 2 or 3 different carafe sizes (small, medium and large).

Note that if the carafe function is not active in your machine, this parameter will not appear in the adjust menu.

Enter the adjust menu as described and scroll to:



Press YES and the display will show:



S indicating the small carafe. Press UP or DOWN to reach the desired value and YES to confirm.

This way all 3 possible carafe sizes can be adjusted.

Adjusting the temperature:

This is the working temperature of the pre-heater (not on all models. If you see 3 separate temperatures in the display at Idle mode, you have a pre-heater) in the machine, and not the actual temperature of the dispensed drink. This is lower due to mix with products and handling inside the machine. The temperature of the tea water will be within 5° of this setting.

Enter the adjust menu as described and scroll to:



Press YES and the display will show:



Press UP or DOWN to reach the desired value and YES to confirm. A max limit for this adjustment is pre-programmed into the machine preventing you from setting the temperature too high.

Adjusting the brew limit:

The brew limit is the lowest temperature of the pre heater, where the machine will allow dispensing of drinks. If the temperature of the boiler is below this value, the thermometer icon in the display will be blinking.

Enter the adjust menu as described and scroll to:



Press YES and the display will show:



Press UP or DOWN to reach the desired value and YES to confirm. A min limit for this adjustment is pre-programmed into the machine preventing you from setting the value too low.

Adjusting the bean to cup boiler temperature:

The bean to cup boiler temperature is temperature of the water reaching the beans.

Enter the adjust menu as described and scroll to:



Press YES and the display will show:



Note: Temperatures much higher than 90 C° / 194 F° can make the coffee bitter and unpleasant. We recommend 86-88 C° / 186-190 F°

Press UP or DOWN to reach the desired value and YES to confirm. A min and max limit for this adjustment is pre-programmed into the machine preventing you from setting the value too low or high.

Adjusting the steamer temperature:

The bean to cup boiler temperature is temperature of the steam boiler used to generate steam for the milk frothing.

Enter the adjust menu as described and scroll to:



Press YES and the display will show:



Press UP or DOWN to reach the desired value and YES to confirm. A min and max limit for this adjustment is pre-programmed into the machine preventing you from setting the value too low or high.

Adjusting milk Temperature:

Enter the "Adjust" menu as described. Scroll to the "Temperature" menu and select "Milk Temp" as shown below :



Milk temperature can be adjust as desired from value -10 to 10. A higher number means a higher temperature. Lower means higher temperature and vice versa. (NOTE: Essentially the adjustment is altering the speed of the milk pump, causing the temperature alteration. The system account for the new speed in all it's calculations.)

Press YES and the display will show:



Press UP or DOWN to reach the desired value and YES to confirm. Temperature can be adjusted from value -10 to 10 .

Adjusting version:

Your coffee machine MAY be programmed with more than one set (version) of recipes. If this is the case, you can switch between these different set by adjusting the active version.

Enter the adjust menu as described and scroll to:



Press YES, and the display will show:



Press UP or DOWN to reach the desired value and YES to confirm. If you adjust the version to a position in which no recipes are programmed into your machine, the result will be the display showing:



Whenever a selection key is pressed.

Adjusting the watch:

Your coffee machine is equipped with a watch. The watch is battery backed up, and will maintain working for at least 2 days even if mains power is removed.

Enter the adjust menu as described and press UP or DOWN until the display shows:

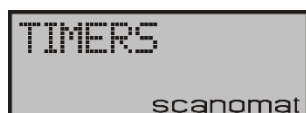


Press Yes, and the display will show the current time with the minutes blinking. Adjust these by pressing UP or DOWN and YES to confirm. Adjust the hours in the same way.

Adjusting the timers:

Your coffee machine is equipped with 4 programmable timers. These are designed to power the machine down in certain periods. The timers are all 24 hour based, meaning that not weekly or monthly functions are available.

Enter the adjust menu as described and press UP or DOWN until the display shows:



Press YES, and the display will show (example)



With the minutes blinking. OFF indicating that this is the time where your coffee machine will power off. Use the UP, DOWN and YES to adjust this time, and thereafter repeat the procedure with the ON time. After that, you will get the option to activate or deactivate the timer in question.

Example: If you want your coffee machine to power down between 23:00 in the evening and 6:00 in the morning, adjust the timer1 to OFF : 23:00 and ON : 6:00 and set it to activated.

If you are using more than one active timer, make sure that the timer periods are not overlapping.

You do not need to go through all timer adjustment to set just one. When finished with one timer, simply press NO to go back out.

Machine settings:

The machine settings are a lot of different parameters, which can be selected or deselected by you. . Press the navigation button UP or DOWN until following appears:



Press YES and the display will show:



Use UP and DOWN to scroll through all the different settings and press YES to change the setting currently in the display and following will appear (example):



Press YES and the current status will appear in the lower line of the display. Use UP or DOWN to alter this and YES to confirm.

NOTE: Not all settings may be relevant to all machine types.

Key beep:

Is simply the response sound when you press a button on the keyboard.

Child lock:

Is a function to prevent children from unintentionally activating your coffee machine. If this function is active, taking a selection is done by first pressing YES, and while holding this pressed, pressing the selection button. Pressing the selection button alone in this mode will cause an alarm, and the display will show:



Disable keypad

If this function is activated, the Keypad is disabled and will be non functioning. To deactivate, press the "Strong" + "Yes" key at the same time.

Fahrenheit:

Is an option to have the temperature in the boiler displayed in Fahrenheit en stead of Celsius (or centigrade).

Am / Pm time:

Is selecting between the Am / Pm way of showing the time and the 24 hour system.

Display watch:

Is choosing whether the watch should appear in the display, whenever your coffee machine is in idle mode.

Automatic off:

If this setting is activated, your coffee machine will automatically turn itself off, if has been inactive for 15 minutes.

Cup light:

Your coffee machine may be equipped with a light illuminating the dispensed drinks. If this is the case, it can be activated or deactivated by means of this function.

Carafes:

If your machine does not have the direct carafe buttons on the keyboard, the menu activated carafe function can be activated or deactivated by this function.

NOTE: If your machine is with the SERVICE KEY SYSTEM active, the CARAFES function determines whether the carafes keys should be available for self service customers or not:

If carafes = OFF, carafe keys will only be available in SERVICE KEY MODE

Else they will be available always.

Mugs:

If your machine does not have the direct large button on the keyboard, the menu activated large function can be activated or deactivated by this function.

Auto start:

If this function is active, pressing a selection button when your machine is off will cause it to turn on, heat up, and dispense the selection when it is ready.

Adjust lock:

If adjust lock is activated, the menu system is locked out, so only carafe, large and read are available. To enter the rest of the menu, the machine must be in SERVICE KEY mode. Note that setting this function to active is irreversible, unless you have the option to go into SERVICE KEY mode.

Water tank:

Your coffee machine may be equipped with as well external water supply as an internal cold-water reservoir. If this is the case, selecting between these 2 options is done by this function.

Instant:

Not relevant for juice machine.

2 key clean:

If set to ON, the clean functions is activated by simultaneously pressing YES and CLEAN.

Queuing:

If set to ON the next drink can be ordered while the current one is being dispensed. The next drink will then start immediately after the first one.

BT reset:

A function to reset the BlueTooth® module. **You should carry this function out after consulting a Scanomat technician!**

BT iOs Support:

Must be set to ON if running with Apple devices on the BlueTooth®

BT Visible:

Must be set to ON, if the machine shall appear as a potential BlueTooth® device on nearby devices with BlueTooth®.

BT Pairing:

Must be set to ON, if new devices should be able to pair their BlueTooth® with the one of the Scanomat machine.

Weighing:

Weighing is a programme, where drinks are dispensed without water. The purpose is to verify the dispensed amount of products in the drinks.

Press the navigation button UP or DOWN until the display shows:



Press YES and the display will show (example):



Pressing a selection button will now cause the machine to dispense the COFFEE product included in this drink. If the selected drink does not contain COFFEE, nothing will happen.

In case of weighing coffee from the grinder, the door must be open, a magnet in place to simulate the door switch, the scraper arm moved all the way out and something (e.g. the lower 25 mm of a paper cup) placed on the scraper plate to collect the ground coffee.

Use UP and DOWN to select between the different products in the machine.

To get an average, take at least 5 portions before weighing it.

Service key mode:

Service key mode is a mode, which allows extra functions depending of the configuration of your machine.

There are a number of possible ways to enter this mode:

If your machine is equipped with the quality key system, either based on magnetic cards or contact less TAGS, a service mode key or TAG has been supplied with the machine.

If neither, the Service key mode can be obtained by pressing a sequence of buttons on the keyboard. There may be a maximum delay in between 2 presses of 1 second.

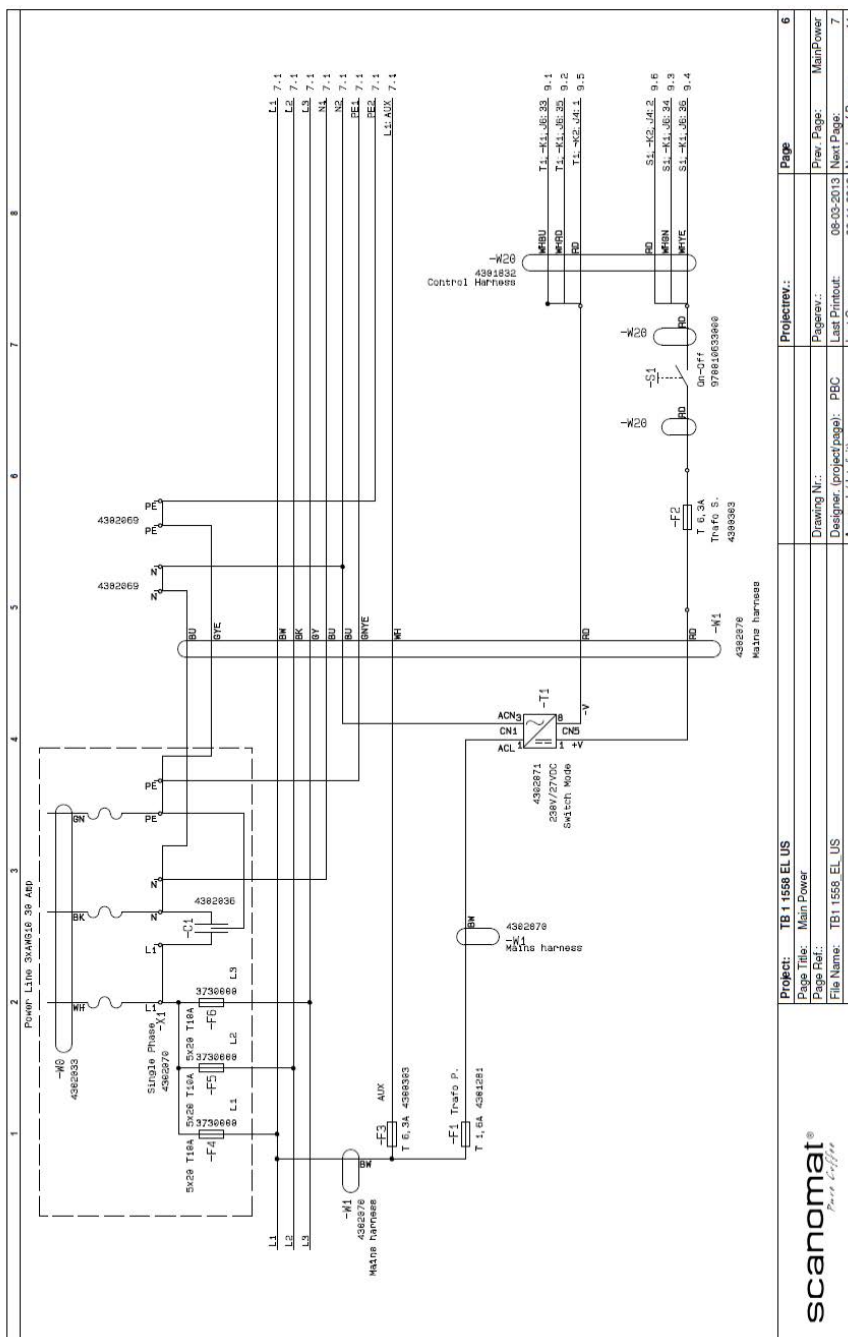
The code is as follows:

DECAF/SMALL CARAFE
UP
STRONG
MILD
DOWN
LARGE/MEDIUM CARAFE

The machine will acknowledge by a sound.

The service key mode is left automatically after 30 seconds without any buttons being pressed.

Connection chart:



Project: TB 1 1558 EL US		Projectrev.: 6
Page Title: Main Power		Page: 6
Page Ref.: TB 1 1558 EL US	Design: PBC	Prev. Page: MainPower
File Name: TB 1 1558 EL US	Approved: (date/init):	Last Printout: 08-03-2013
		Next Page: 7
		Last Print: 30-11-2012
		Number of Pages: 44

Daily Cleaning & Maintenance:

Caution: Before starting the cleaning procedure make sure that the coffee brewer is switched off in order to avoid damages and injuries with hot water and moving parts (see point D on the General Drawing). Please note that only the low voltage control circuit will be cut off by this switch, if the internal covers are removed there will still be mains voltage to the required heaters etc.



1 Open the stainless door, wait until the piston raises. Turn off the TopBrewer using the on/off button on the front panel of the machine.



2 Remove the milk foamer by twisting the metal head anti-clockwise. Slide down the black casing. Unscrew the black foaming heads. Clean in warm water to ensure all milk deposits are removed. Dry & reattach.



3 Thoroughly wipe underneath the piston cleaning the metal filter and wipe all around cleaning the O-ring, to remove deposits of coffee. Finish with cleaning the metal filter on the bottom piston.



4 Brush around the top of the brew unit, using the long handled brush in order to remove any ground coffee deposits.



5 The stainless steel cylinder top must be completely clean with no coffee remains. Push the scraper arm back in place.



6 Place a TopBrewer cleaning tablet into the scraper. Close the stainless door.



7 Lower the TopBrewer swan neck to its lowest position and select "CLEAN" from the left pane menu. The process will take approximately 1 minute and "Machine is ready" will appear in the statusbar in the App once completed.



8 Prior to use, prime the TopBrewer by dispensing one warm milk or a milk based drink.

Milk cleaning



1 Add a cleaning tablet 500 ml / 17 oz warm water and let it dissolve for a couple of minutes. Place the tube or the milkspear into the glass.



2 On your iPad or Android device, select "Customize" beneath the "Warm Milk" drink icon.



3 Slide the number of cups up to 5 and select "Start now". The machine will run the cleaning liquid through the system and clean the milk foamer.



4 Fill the glass with cold clean water and place the milk spear into the glass. Repeat step 2 and 3. Once done, put the milk back and the machine is ready to use.



TIP Remove lid from bean hopper and wipe with a damp cloth prior to filling with beans. (Fresh TopBrewer beans have a great flavour, therefore do not overfill the hoppers to allow beans to always stay their best – store unused beans in a sealed bag somewhere cool)



TIP The machine will notify you in the status bar of the app when the dregbin containing the coffee remains is full. When removing the dregbin the unit will reset its counting system and will assume that you have emptied it. Therefore empty the dregbin once removed from the unit.

The machine is designed for coffee beans only. Please read the instructions carefully before attempting to clean the machine.

We recommend cleaning your TopBrewer daily by following the steps 6 through 9, but in some cases the frequency can be less depending on the milk type, fat content, humidity and temperature.

Once a week it is recommended to follow the complete cleaning instructions. A clean machine makes better coffee.

We only recommend using TopBrewer labelled cleaning solutions that have been proven to properly clean the machine. For further information please refer to the usermanual.

Trouble Shooting:

Problem	Possible Cause	Solution
No operation at all	No power to the machine	Check supply line and the Main Power Switch (C)
DOOR OPEN shows in the display.	Door not closed	Close the door
	Reed switch not activated	Make sure the door is not misaligned
Only water is dispensed	No beans in the canisters	Fill Beans
	Grinder stuck	Make sure grinder is running when selecting a drink. If it's stuck: Power off, vacuum out all beans and remove foreign debris
FILL WATER shows in the display	Machine is not getting any water	Check that water supply has been connected, and water supply is open.
HEATING shows in the display	The flash-heater has tripped is safety switch.	Press the RESET button by pulling out the waste tray and hitting the button through the hole Reset brewer: Press through hole in brewer cover.
TOP PISTON ERROR displayed	The machines has not been properly cleaned around the top piston.	Clean the piston thoroughly with a damp cloth and run the "Clean" program (See daily maintenance)
Coffee is leaking at the Top Piston	The machines has not been properly cleaned around the top piston.	Clean the piston thoroughly with a damp cloth and run the "Clean" program (See daily maintenance)
BOTTOM PISTON ERROR	The machine has likely not been cleaned for a while	Clean the piston thoroughly with a damp cloth and run the "Clean" program (See daily maintenance)
NO BEANS shows in display	The bean canister is likely empty	Fill beans into the bean canister
Display shows OVERLOAD	One of the outputs are overloaded.	Reset the machine. If the problem persists, contact your authorized servicer
Milk is not warm enough	The steam is not reaching the milk frother	Clean the steam nozzle and milk orifice. - and/or - Press the RESET button by pulling out the waste tray and hitting the button through the hole
	The milk pump is running too fast	Go into the Adjust menu, locate the "Milk Temp" setting and <u>increase</u> the current value

Problem	Possible Cause	Solution
Brewing coffee/espresso very slow.	The coffgrinder is adjusted too fine	Go to Adjust > Grinder > Change the value. (Higher value = finer/ slower, Lower value = coarser/ faster). Test by doing minimum 2 cups.
	The top piston is blocked	Clean the top piston filter.
Brewing coffee/espresso very fast.	The coffgrinder is adjusted too coarse	Go to Adjust > Grinder > Change the value. (Higher value = finer/ slower, Lower value = coarser/ faster). Test by doing minimum 2 cups.
Keyboard non functioning	The machine has the Disable Keypad function enabled.	Push the keys “Strong” + “Yes” at the same time to disable

Bluetooth Troubleshooting

If having problems connecting with your iDevice, try to remove the pairing (iPad or iPhone) and then restart the TopBrewer on the ON/OFF switch. (Minimum 6 seconds).

If that doesn't help, it might be there have been too many trying to connect simultaneously, and a reset of the module might be necessary.

Please do the following:

1. In the menu of the actual machine, go to Settings-> BT reset and press YES and then press the CLEAN button
2. Restart the machine ON/OFF (power cycle for resetting). Make sure the machine is off for 6 seconds
3. Restart the machine one more time ON/OFF, wait for 6 seconds.
4. Locate the bluetooth menu on your iPad and forget the current machine pairing by pressing the symbol on the right.
5. (Will be an 'i' logo for iOS 7 and an blue arrow if iOS 6)
6. Try to connect with iPhone or iPad
7. If that still doesn't connect, restart the iPad by pressing the lock and home button simultaneously until the screen turns black.
8. The iPad will now discover the machine again. Select it to start initializing pairing sequence.
9. When pairing successful, go to the ->Settings in the machine and set BT Pairing to OFF to enable a secure stable connection.